

# Production Worksheet

Wilcom EmbroideryStudio - Designing

## \*KIWI 4X4\*

Design: **kiwi 4x4**

Title:

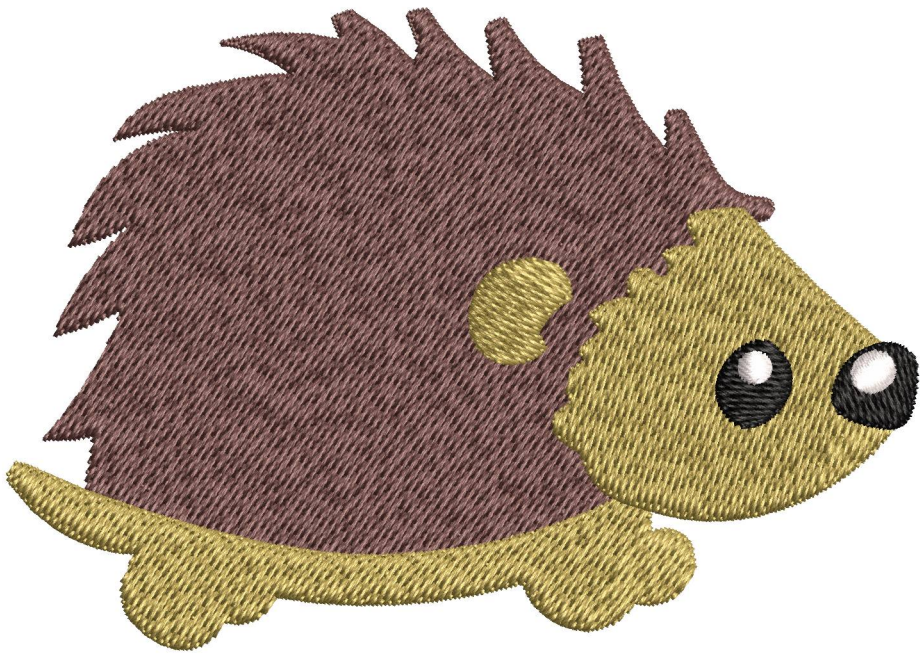
Stitches: 10,370  
Height: 66.8 mm  
Width: 95.1 mm  
Colors: 4  
Colorway: Colorway 1  
Zoom: 1.26



Machine format: Tajima  
Color changes: 4  
Stops: 5  
Trims: 7  
Left: 47.6 mm  
Right: 47.6 mm  
Up: 33.4 mm  
Down: 33.4 mm  
EndX: 0.0 mm  
EndY: 0.0 mm  
Area: 6358.4 mm<sup>2</sup>  
Max stitch: 6.7 mm  
Min stitch: 0.2 mm  
Max jump: 7.0 mm

Stop Sequence:

#	N#	Color	St.	Code	Name	Chart
1.	4		6,357	1358	Cedar Bark	Madeira Classic 40
2.	3		9,570	1193	Peridot	Madeira Classic 40
3.	1		9,983	1000	Black	Madeira Classic 40
4.	3		10,250	1193	Peridot	Madeira Classic 40
5.	2		10,368	1003	White	Madeira Classic 40



**Color Film**

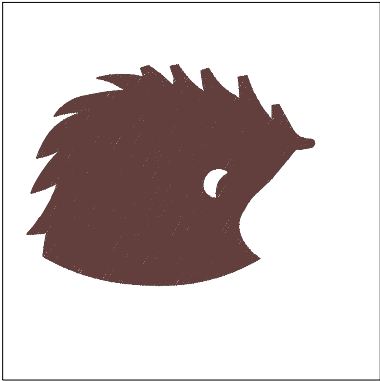
Wilcom EmbroideryStudio - Designing

**\*KIWI 4X4\***

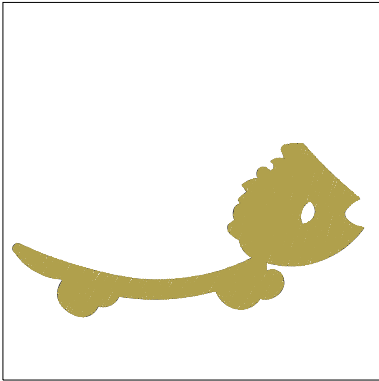
Design: **kiwi 4x4**

Title:

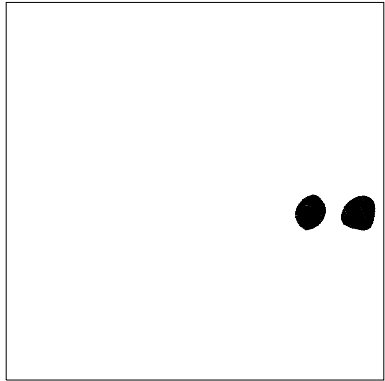
Stitches: 10,370  
Height: 66.8 mm  
Width: 95.1 mm  
Colors: 4  
Colorway: Colorway 1  
Zoom: 0.50



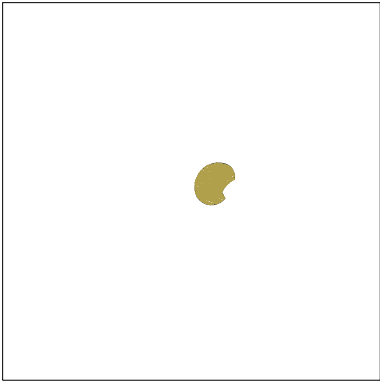
Stop #: 1  
Element:  
Code: 1358  
Name: Cedar Bark  
Chart: Madeira Classic 40  
Stitches: 6,357  
Thread used: 41.47m



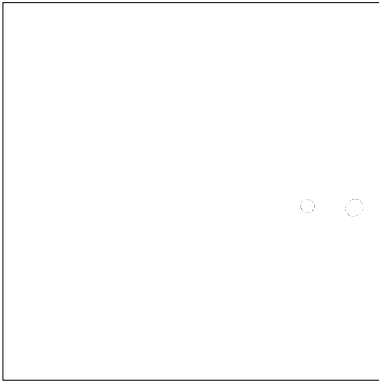
Stop #: 2  
Element:  
Code: 1193  
Name: Peridot  
Chart: Madeira Classic 40  
Stitches: 3,213  
Thread used: 18.78m



Stop #: 3  
Element:  
Code: 1000  
Name: Black  
Chart: Madeira Classic 40  
Stitches: 413  
Thread used: 2.06m



Stop #: 4  
Element:  
Code: 1193  
Name: Peridot  
Chart: Madeira Classic 40  
Stitches: 267  
Thread used: 1.37m



Stop #: 5  
Element:  
Code: 1003  
Name: White  
Chart: Madeira Classic 40  
Stitches: 118  
Thread used: 0.58m