

Production Worksheet

Wilcom EmbroideryStudio - Designing

SQUIRREL A 3X3

Design: **Squirrel A 3x3**

Title:

Stitches: 8,845
Height: 76.6 mm
Width: 67.1 mm
Colors: 7
Colorway: Colorway 1
Zoom: 1.77



Machine format: Tajima
Color changes: 9
Stops: 10
Trims: 14
Left: 33.6 mm
Right: 33.6 mm
Up: 38.3 mm
Down: 38.3 mm
EndX: 0.0 mm
EndY: 0.0 mm
Area: 5138.6 mm²
Max stitch: 7.4 mm
Min stitch: 0.2 mm
Max jump: 6.6 mm

Stop Sequence:

#	N#	Color	St.	Code	Name	Chart
1.	6		2,855	1258	Grizzly Bear	Madeira Classic 40
2.	4		3,889	1194	Dark Olive	Madeira Classic 40
3.	5		3,986	1230	Root Beer	Madeira Classic 40
4.	1		4,064	1180	Daffodil	Madeira Classic 40
5.	7		7,917	1055	Latte	Madeira Classic 40
6.	5		8,252	1230	Root Beer	Madeira Classic 40
7.	3		8,717	1003	White	Madeira Classic 40
8.	2		8,766	1000	Black	Madeira Classic 40
9.	3		8,790	1003	White	Madeira Classic 40
10.	6		8,843	1258	Grizzly Bear	Madeira Classic 40



Color Film

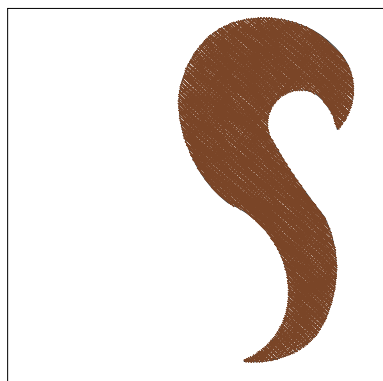
Wilcom EmbroideryStudio - Designing

SQUIRREL A 3X3

Design: **Squirrel A 3x3**

Title:

Stitches: 8,845
Height: 76.6 mm
Width: 67.1 mm
Colors: 7
Colorway: Colorway 1
Zoom: 0.62



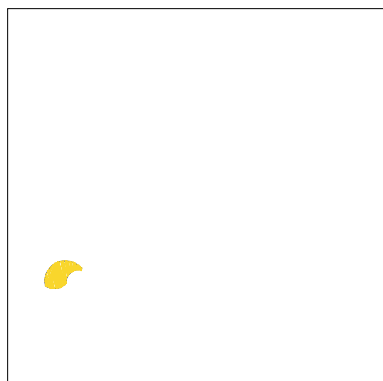
Stop #: 1
Element:
Code: 1258
Name: Grizzly Bear
Chart: Madeira Classic 40
Stitches: 2,855
Thread used: 18.09m



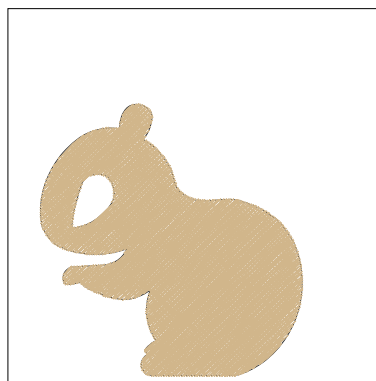
Stop #: 2
Element:
Code: 1194
Name: Dark Olive
Chart: Madeira Classic 40
Stitches: 1,034
Thread used: 4.99m



Stop #: 3
Element:
Code: 1230
Name: Root Beer
Chart: Madeira Classic 40
Stitches: 97
Thread used: 0.63m



Stop #: 4
Element:
Code: 1180
Name: Daffodil
Chart: Madeira Classic 40
Stitches: 78
Thread used: 0.45m



Stop #: 5
Element:
Code: 1055
Name: Latte
Chart: Madeira Classic 40
Stitches: 3,853
Thread used: 24.86m



Stop #: 6
Element:
Code: 1230
Name: Root Beer
Chart: Madeira Classic 40
Stitches: 335
Thread used: 1.34m

Color Film

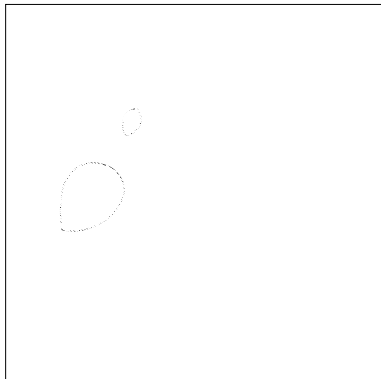
Wilcom EmbroideryStudio - Designing

SQUIRREL A 3X3

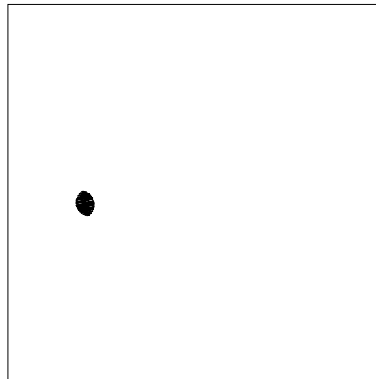
Design: **Squirrel A 3x3**

Title:

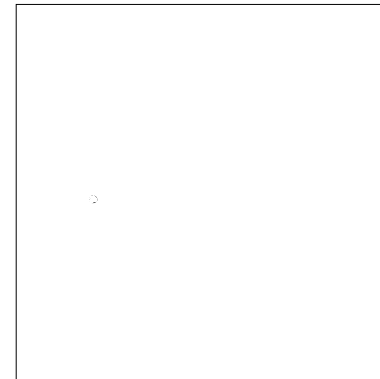
Stitches: 8,845
Height: 76.6 mm
Width: 67.1 mm
Colors: 7
Colorway: Colorway 1
Zoom: 0.62



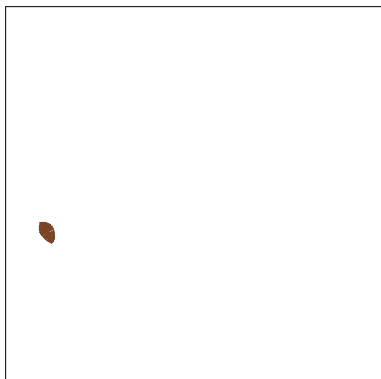
Stop #: 7
Element:
Code: 1003
Name: White
Chart: Madeira Classic 40
Stitches: 465
Thread used: 2.60m



Stop #: 8
Element:
Code: 1000
Name: Black
Chart: Madeira Classic 40
Stitches: 49
Thread used: 0.25m



Stop #: 9
Element:
Code: 1003
Name: White
Chart: Madeira Classic 40
Stitches: 24
Thread used: 0.08m



Stop #: 10
Element:
Code: 1258
Name: Grizzly Bear
Chart: Madeira Classic 40
Stitches: 53
Thread used: 0.23m