

Production Worksheet

Wilcom EmbroideryStudio - Designing

MONKEY BABY B 4X4

Design: **Monkey Baby B 4x4**

Title:

Stitches: 8,407

Height: 94.9 mm

Width: 73.8 mm

Colors: 5

Colorway: Colorway 1

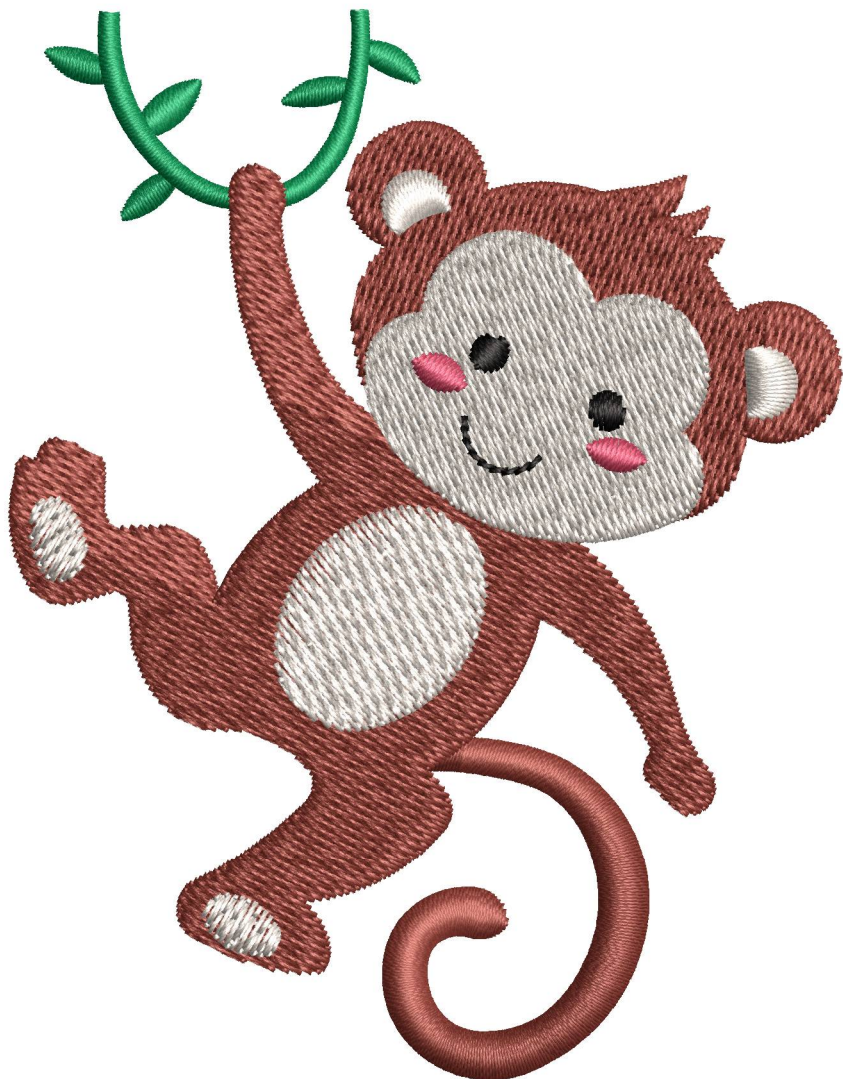
Zoom: 1.49



Machine format: Tajima
Color changes: 4
Stops: 5
Trims: 13
Left: 36.9 mm
Right: 36.9 mm
Up: 47.4 mm
Down: 47.4 mm
EndX: 0.0 mm
EndY: 0.0 mm
Area: 6998.8 mm²
Max stitch: 6.9 mm
Min stitch: 0.3 mm
Max jump: 6.9 mm

Stop Sequence:

#	N#	Color	St.	Code	Name	Chart
1.	1		572	1079	Celtic Green	Madeira Classic 40
2.	4		6,328	1174	Cinnamon Stick	Madeira Classic 40
3.	3		8,216	1410		Madeira Classic 40
4.	2		8,327	1000	Black	Madeira Classic 40
5.	5		8,405	1354	Watermelon	Madeira Classic 40



Color Film

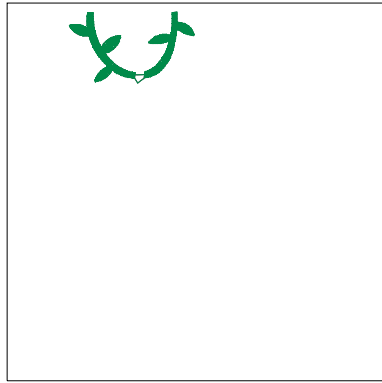
Wilcom EmbroideryStudio - Designing

MONKEY BABY B 4X4

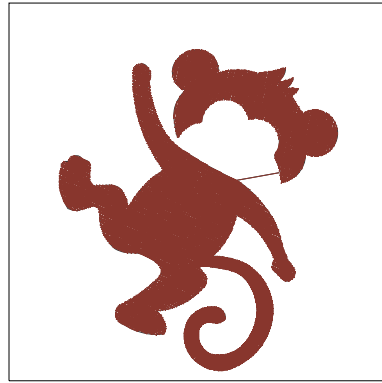
Design: **Monkey Baby B 4x4**

Title:

Stitches: 8,407
Height: 94.9 mm
Width: 73.8 mm
Colors: 5
Colorway: Colorway 1
Zoom: 0.50



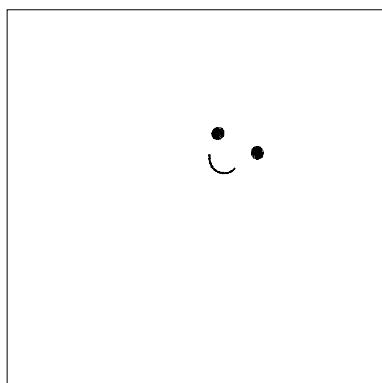
Stop #: 1
Element:
Code: 1079
Name: Celtic Green
Chart: Madeira Classic 40
Stitches: 572
Thread used: 2.60m



Stop #: 2
Element:
Code: 1174
Name: Cinnamon Stick
Chart: Madeira Classic 40
Stitches: 5,756
Thread used: 35.06m



Stop #: 3
Element:
Code: 1410
Name:
Chart: Madeira Classic 40
Stitches: 1,888
Thread used: 11.49m



Stop #: 4
Element:
Code: 1000
Name: Black
Chart: Madeira Classic 40
Stitches: 111
Thread used: 0.44m



Stop #: 5
Element:
Code: 1354
Name: Watermelon
Chart: Madeira Classic 40
Stitches: 78
Thread used: 0.32m