

# Production Worksheet

Wilcom EmbroideryStudio - Designing

## \*ELEPHANT BABY 5X5\*

Design: **Elephant Baby 5x5**

Title:

Stitches: 18,500

Height: 116.7 mm

Width: 127.2 mm

Colors: 4

Colorway: Colorway 1

Zoom: 0.85



Machine format: Tajima

Color changes: 4

Stops: 5

Trims: 12

Left: 63.6 mm

Right: 63.6 mm

Up: 58.3 mm

Down: 58.3 mm

EndX: 0.0 mm

EndY: 0.0 mm

Area: 14832.8 mm<sup>2</sup>

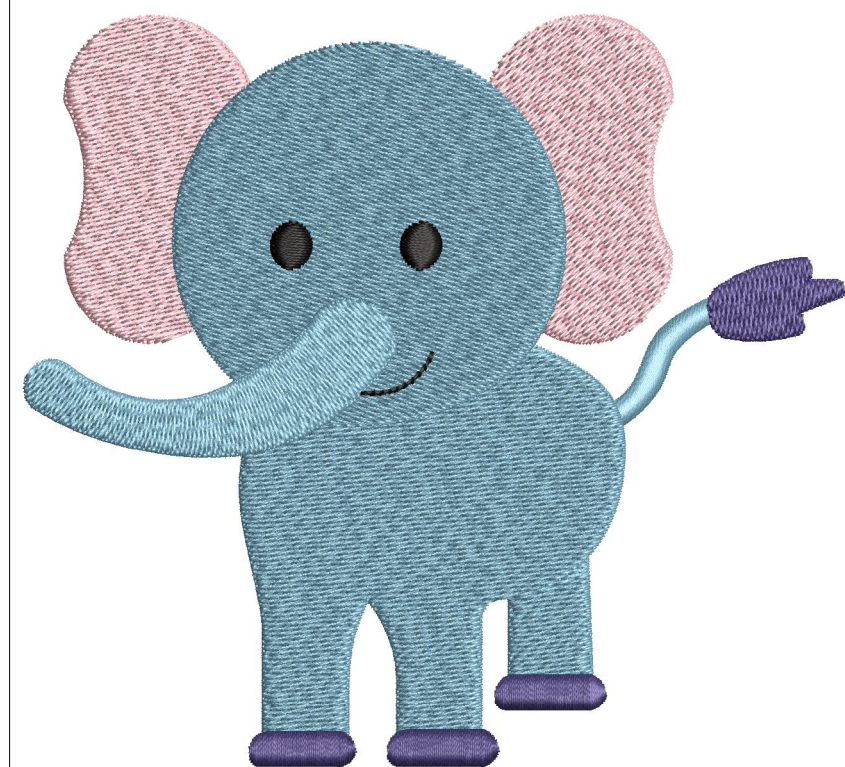
Max stitch: 6.9 mm

Min stitch: 0.4 mm

Max jump: 6.6 mm

Stop Sequence:

#	N#	Color	St.	Code	Name	Chart
1.	1		5,891	1373	Cerulean Frost	Madeira Classic 40
2.	2		6,932	1112	Majestic Purple	Madeira Classic 40
3.	4		11,411	1120	Baby Pink	Madeira Classic 40
4.	1		18,351	1373	Cerulean Frost	Madeira Classic 40
5.	3		18,498	1000	Black	Madeira Classic 40



# Color Film

Wilcom EmbroideryStudio - Designing

## \*ELEPHANT BABY 5X5\*

Design: **Elephant Baby 5x5**

Title:

Stitches: 18,500

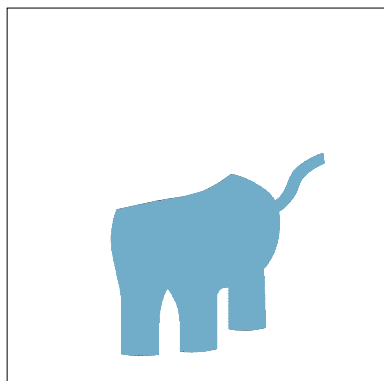
Height: 116.7 mm

Width: 127.2 mm

Colors: 4

Colorway: Colorway 1

Zoom: 0.37



Stop #: 1

Element:

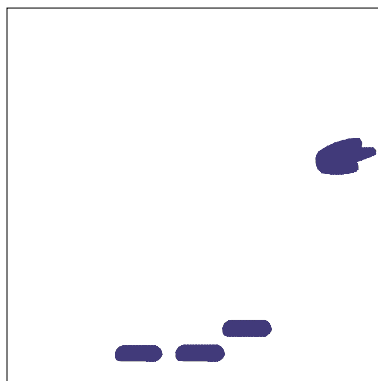
Code: 1373

Name: Cerulean Frost

Chart: Madeira Classic 40

Stitches: 5,891

Thread used: 39.13m



Stop #: 2

Element:

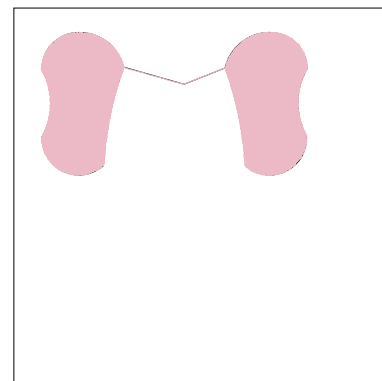
Code: 1112

Name: Majestic Purple

Chart: Madeira Classic 40

Stitches: 1,041

Thread used: 7.06m



Stop #: 3

Element:

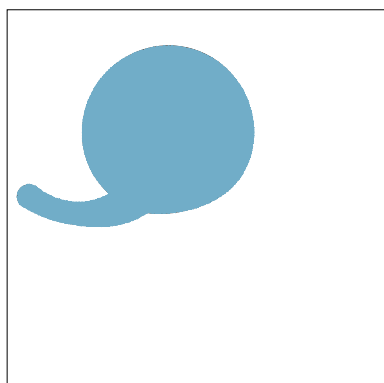
Code: 1120

Name: Baby Pink

Chart: Madeira Classic 40

Stitches: 4,479

Thread used: 29.47m



Stop #: 4

Element:

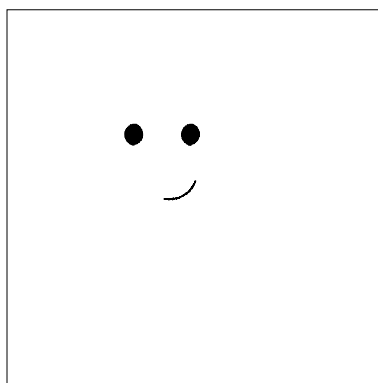
Code: 1373

Name: Cerulean Frost

Chart: Madeira Classic 40

Stitches: 6,940

Thread used: 45.77m



Stop #: 5

Element:

Code: 1000

Name: Black

Chart: Madeira Classic 40

Stitches: 147

Thread used: 0.89m