

# Production Worksheet

Wilcom EmbroideryStudio - Designing

## \*ELEPHANT BABY 4X4\*

Design: **Elephant Baby 4x4**

Title:

Stitches: 11,188

Height: 87.1 mm

Width: 94.8 mm

Colors: 4

Colorway: Colorway 1

Zoom: 1.14



Machine format: Tajima

Color changes: 4

Stops: 5

Trims: 12

Left: 47.4 mm

Right: 47.4 mm

Up: 43.5 mm

Down: 43.5 mm

EndX: 0.0 mm

EndY: 0.0 mm

Area: 8253.2 mm<sup>2</sup>

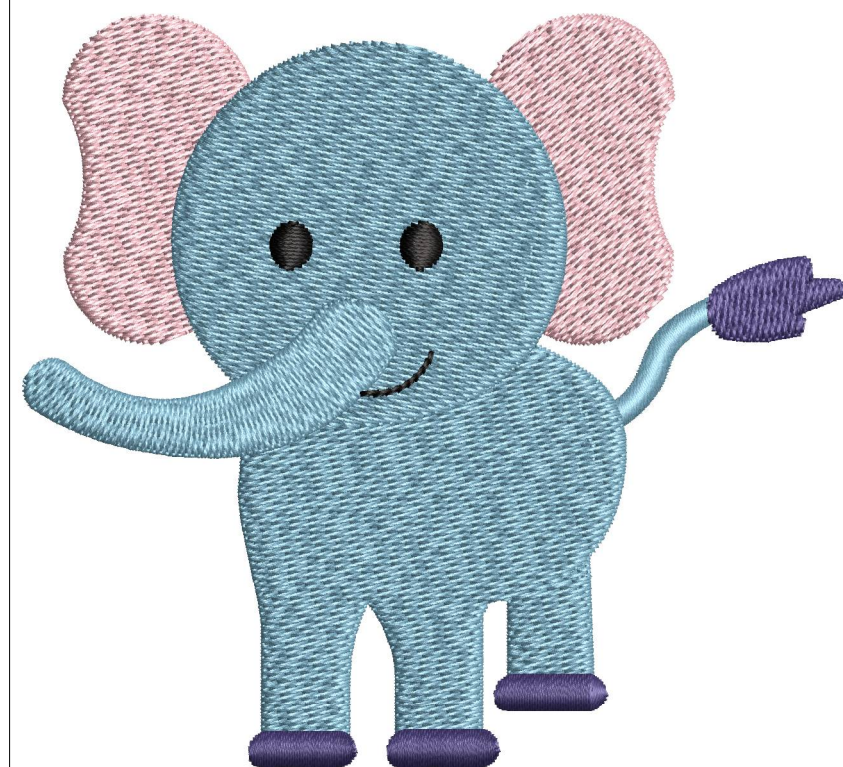
Max stitch: 6.6 mm

Min stitch: 0.1 mm

Max jump: 6.6 mm

Stop Sequence:

#	N#	Color	St.	Code	Name	Chart
1.	1		3,557	1373	Cerulean Frost	Madeira Classic 40
2.	2		4,303	1112	Majestic Purple	Madeira Classic 40
3.	4		6,966	1120	Baby Pink	Madeira Classic 40
4.	1		11,064	1373	Cerulean Frost	Madeira Classic 40
5.	3		11,186	1000	Black	Madeira Classic 40



# Color Film

Wilcom EmbroideryStudio - Designing

## \*ELEPHANT BABY 4X4\*

Design: **Elephant Baby 4x4**

Title:

Stitches: 11,188

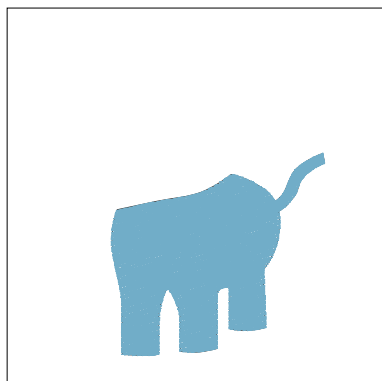
Height: 87.1 mm

Width: 94.8 mm

Colors: 4

Colorway: Colorway 1

Zoom: 0.50



Stop #: 1

Element:

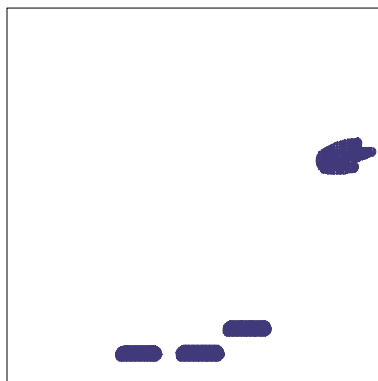
Code: 1373

Name: Cerulean Frost

Chart: Madeira Classic 40

Stitches: 3,557

Thread used: 22.61m



Stop #: 2

Element:

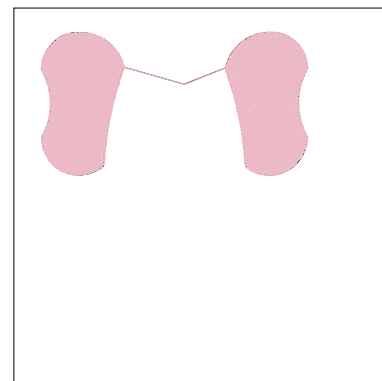
Code: 1112

Name: Majestic Purple

Chart: Madeira Classic 40

Stitches: 746

Thread used: 4.37m



Stop #: 3

Element:

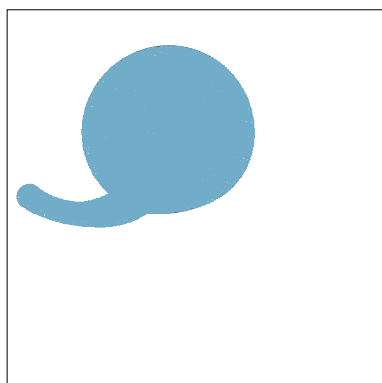
Code: 1120

Name: Baby Pink

Chart: Madeira Classic 40

Stitches: 2,663

Thread used: 16.88m



Stop #: 4

Element:

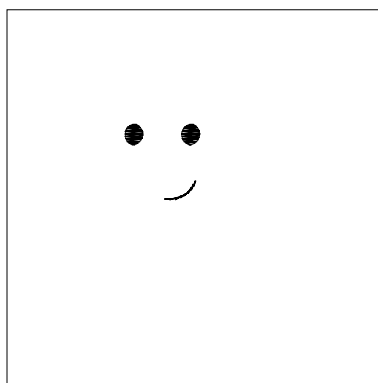
Code: 1373

Name: Cerulean Frost

Chart: Madeira Classic 40

Stitches: 4,098

Thread used: 26.13m



Stop #: 5

Element:

Code: 1000

Name: Black

Chart: Madeira Classic 40

Stitches: 122

Thread used: 0.62m