

Production Worksheet

Wilcom EmbroideryStudio - Designing

BEE 4X4

Design: **Bee 4x4**

Title:

Stitches: 9,930

Height: 71.0 mm

Width: 95.1 mm

Colors: 3

Colorway: Colorway 1

Zoom: 1.29



Machine format: Tajima
Color changes: 5
Stops: 6
Trims: 9
Left: 47.6 mm
Right: 47.6 mm
Up: 35.5 mm
Down: 35.5 mm
EndX: 0.0 mm
EndY: 0.0 mm
Area: 6751.0 mm²
Max stitch: 8.2 mm
Min stitch: 0.0 mm
Max jump: 6.8 mm

Stop Sequence:

| # | N# | Color | St. | Code | Name | Chart |
|----|----|-----------|-------|------|-----------|--------------------|
| 1. | 2 | Black | 1,785 | 1000 | Black | Madeira Classic 40 |
| 2. | 1 | Gold Rush | 3,523 | 1024 | Gold Rush | Madeira Classic 40 |
| 3. | 3 | White | 4,113 | 1001 | White | Madeira Classic 40 |
| 4. | 2 | Black | 6,154 | 1000 | Black | Madeira Classic 40 |
| 5. | 3 | White | 8,743 | 1001 | White | Madeira Classic 40 |
| 6. | 2 | Black | 9,928 | 1000 | Black | Madeira Classic 40 |



Color Film

Wilcom EmbroideryStudio - Designing

BEE 4X4

Design: **Bee 4x4**

Title:

Stitches: 9,930

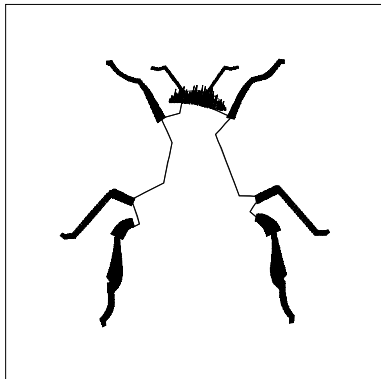
Height: 71.0 mm

Width: 95.1 mm

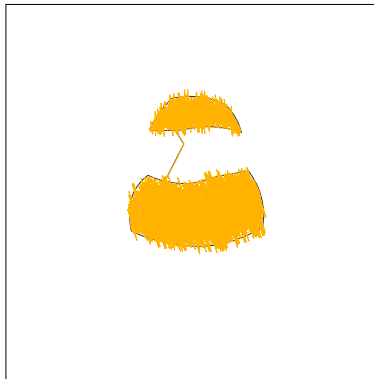
Colors: 3

Colorway: Colorway 1

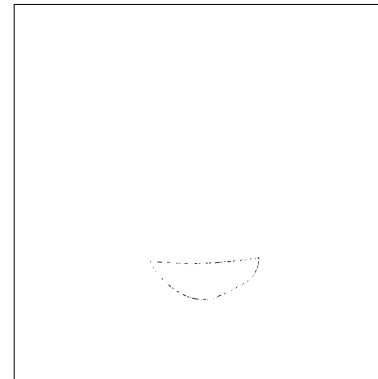
Zoom: 0.50



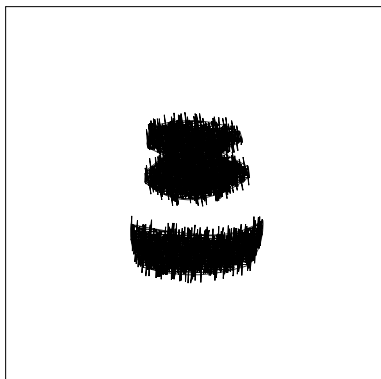
Stop #: 1
Element:
Code: 1000
Name: Black
Chart: Madeira Classic 40
Stitches: 1,785
Thread used: 8.06m



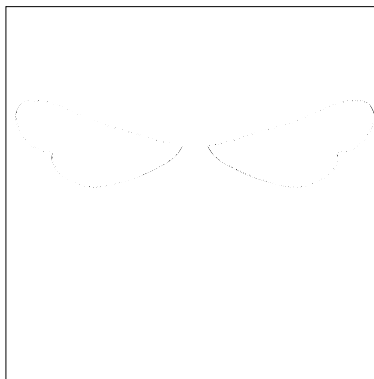
Stop #: 2
Element:
Code: 1024
Name: Gold Rush
Chart: Madeira Classic 40
Stitches: 1,738
Thread used: 10.52m



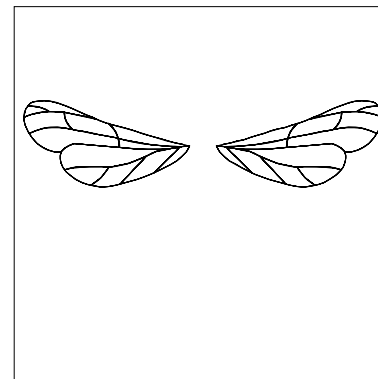
Stop #: 3
Element:
Code: 1001
Name: White
Chart: Madeira Classic 40
Stitches: 590
Thread used: 3.20m



Stop #: 4
Element:
Code: 1000
Name: Black
Chart: Madeira Classic 40
Stitches: 2,041
Thread used: 12.08m



Stop #: 5
Element:
Code: 1001
Name: White
Chart: Madeira Classic 40
Stitches: 2,589
Thread used: 15.77m



Stop #: 6
Element:
Code: 1000
Name: Black
Chart: Madeira Classic 40
Stitches: 1,185
Thread used: 5.07m