

Production Worksheet

Wilcom EmbroideryStudio - Designing

BEE 3X3

Design: **Bee 3x3**

Title:

Stitches: 7,230
Height: 57.0 mm
Width: 76.4 mm
Colors: 3
Colorway: Colorway 1
Zoom: 1.61



Machine format: Tajima
Color changes: 5
Stops: 6
Trims: 9
Left: 38.2 mm
Right: 38.2 mm
Up: 28.5 mm
Down: 28.5 mm
EndX: 0.0 mm
EndY: 0.0 mm
Area: 4350.6 mm²
Max stitch: 6.8 mm
Min stitch: 0.0 mm
Max jump: 6.8 mm

Stop Sequence:

#	N#	Color	St.	Code	Name	Chart
1.	2	Black	1,441	1000	Black	Madeira Classic 40
2.	1	Gold Rush	2,642	1024	Gold Rush	Madeira Classic 40
3.	3	White	3,065	1001	White	Madeira Classic 40
4.	2	Black	4,444	1000	Black	Madeira Classic 40
5.	3	White	6,221	1001	White	Madeira Classic 40
6.	2	Black	7,228	1000	Black	Madeira Classic 40



Color Film

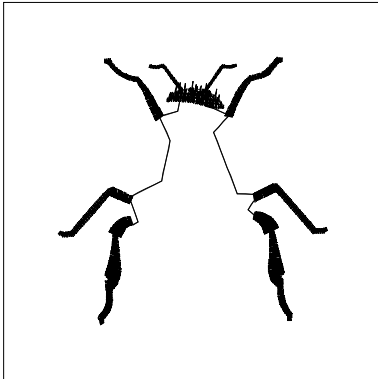
Wilcom EmbroideryStudio - Designing

BEE 3X3

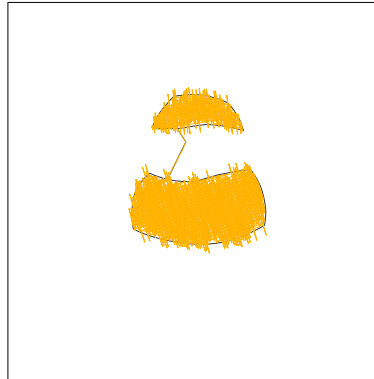
Design: **Bee 3x3**

Title:

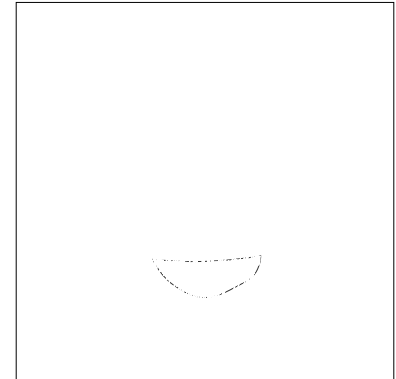
Stitches: 7,230
Height: 57.0 mm
Width: 76.4 mm
Colors: 3
Colorway: Colorway 1
Zoom: 0.62



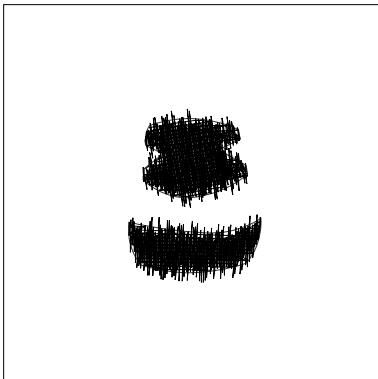
Stop #: 1
Element:
Code: 1000
Name: Black
Chart: Madeira Classic 40
Stitches: 1,441
Thread used: 5.96m



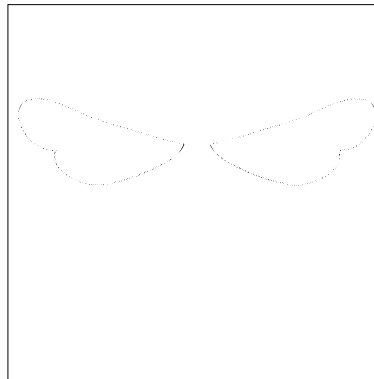
Stop #: 2
Element:
Code: 1024
Name: Gold Rush
Chart: Madeira Classic 40
Stitches: 1,201
Thread used: 7.00m



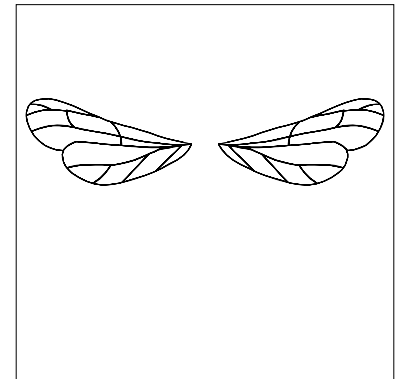
Stop #: 3
Element:
Code: 1001
Name: White
Chart: Madeira Classic 40
Stitches: 423
Thread used: 2.24m



Stop #: 4
Element:
Code: 1000
Name: Black
Chart: Madeira Classic 40
Stitches: 1,379
Thread used: 7.82m



Stop #: 5
Element:
Code: 1001
Name: White
Chart: Madeira Classic 40
Stitches: 1,777
Thread used: 10.50m



Stop #: 6
Element:
Code: 1000
Name: Black
Chart: Madeira Classic 40
Stitches: 1,007
Thread used: 4.17m