

# Production Worksheet

Wilcom EmbroideryStudio - Designing

## \*CAT EYES 5X5\*

Design: **Cat Eyes 5x5**

Title:

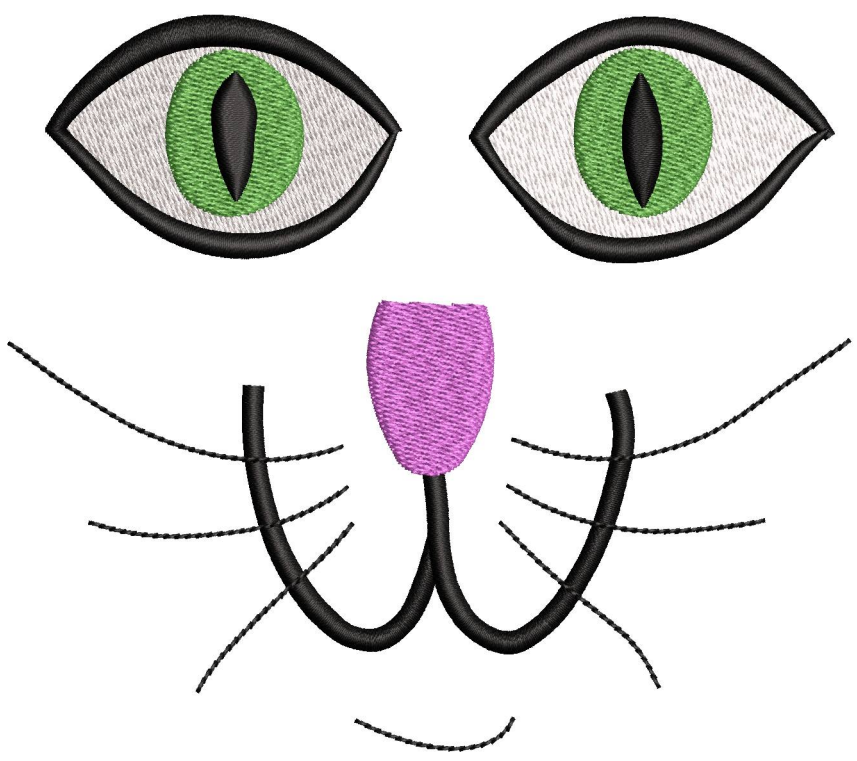
Stitches: 10,537  
Height: 110.8 mm  
Width: 127.1 mm  
Colors: 4  
Colorway: Colorway 1  
Zoom: 0.88



Machine format: Tajima  
Color changes: 4  
Stops: 5  
Trims: 17  
Left: 63.6 mm  
Right: 63.6 mm  
Up: 55.4 mm  
Down: 55.4 mm  
EndX: 0.0 mm  
EndY: 0.0 mm  
Area: 14090.1 mm<sup>2</sup>  
Max stitch: 6.9 mm  
Min stitch: 0.1 mm  
Max jump: 7.0 mm

Stop Sequence:

#	N#	Color	St.	Code	Name	Chart
1.	3		3,974	1003	White	Madeira Classic 40
2.	2		7,419	1000	Black	Madeira Classic 40
3.	1		9,213	1050	Green Thumb	Madeira Classic 40
4.	2		9,642	1000	Black	Madeira Classic 40
5.	4		10,535	1321	Bubble Gum Pink	Madeira Classic 40



# Color Film

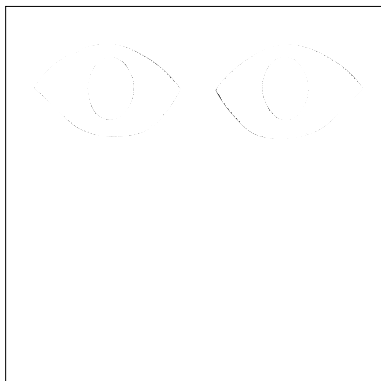
Wilcom EmbroideryStudio - Designing

## \*CAT EYES 5X5\*

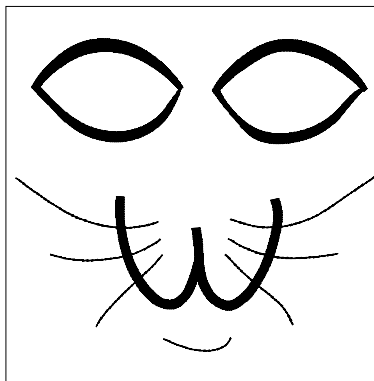
Design: **Cat Eyes 5x5**

Title:

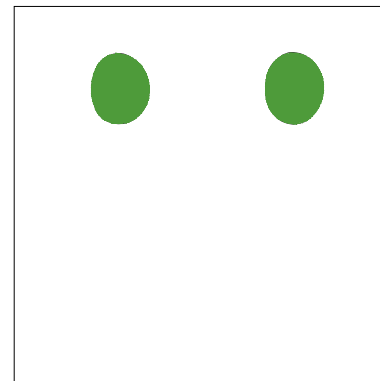
Stitches: 10,537  
Height: 110.8 mm  
Width: 127.1 mm  
Colors: 4  
Colorway: Colorway 1  
Zoom: 0.37



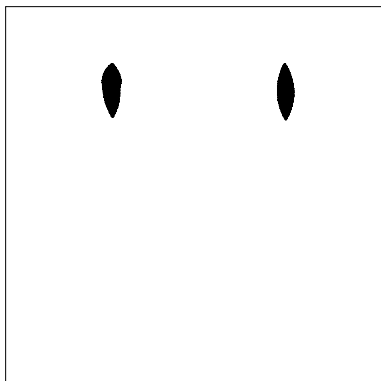
Stop #: 1  
Element:  
Code: 1003  
Name: White  
Chart: Madeira Classic 40  
Stitches: 3,974  
Thread used: 24.20m



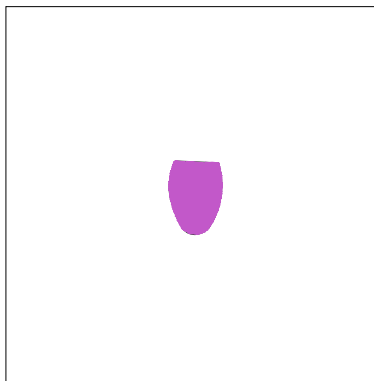
Stop #: 2  
Element:  
Code: 1000  
Name: Black  
Chart: Madeira Classic 40  
Stitches: 3,445  
Thread used: 20.80m



Stop #: 3  
Element:  
Code: 1050  
Name: Green Thumb  
Chart: Madeira Classic 40  
Stitches: 1,794  
Thread used: 11.19m



Stop #: 4  
Element:  
Code: 1000  
Name: Black  
Chart: Madeira Classic 40  
Stitches: 429  
Thread used: 3.01m



Stop #: 5  
Element:  
Code: 1321  
Name: Bubble Gum Pink  
Chart: Madeira Classic 40  
Stitches: 893  
Thread used: 5.54m