

Production Worksheet

Wilcom EmbroideryStudio - Designing

BUTTERFLY A 5X5

Design: **Butterfly A 5x5**

Title:

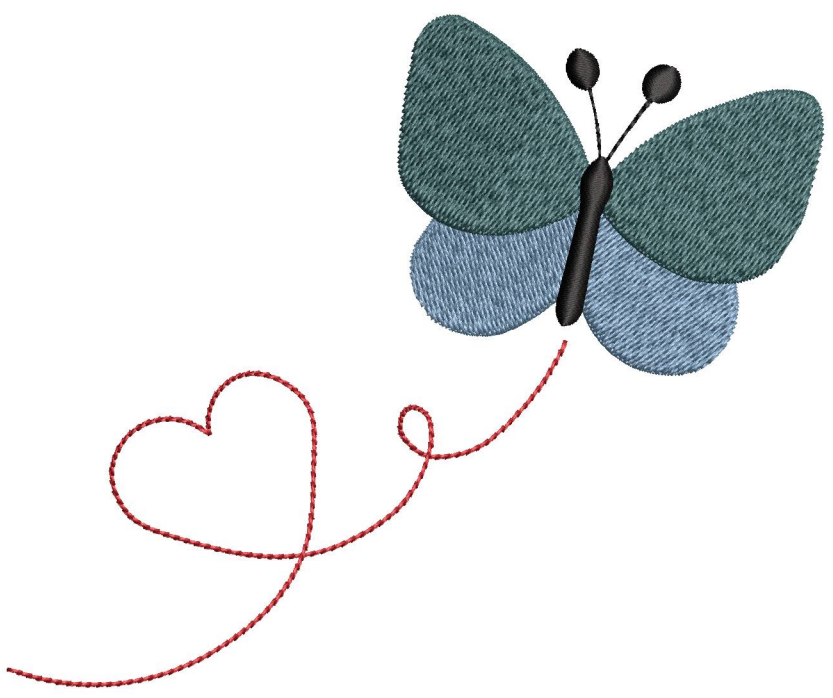
Stitches: 6,058
Height: 104.4 mm
Width: 127.2 mm
Colors: 4
Colorway: Colorway 1
Zoom: 0.85



Machine format: Tajima
Color changes: 3
Stops: 4
Trims: 4
Left: 63.6 mm
Right: 63.6 mm
Up: 52.2 mm
Down: 52.2 mm
EndX: 0.0 mm
EndY: 0.0 mm
Area: 13285.3 mm²
Max stitch: 5.9 mm
Min stitch: 0.3 mm
Max jump: 6.4 mm

Stop Sequence:

#	N#	Color	St.	Code	Name	Chart
1.	3		2,112	1028	Country Kitchen Blue	Madeira Classic 40
2.	1		5,147	1252	Neptune	Madeira Classic 40
3.	4		5,586	1000	Black	Madeira Classic 40
4.	2		6,056	1147	Christmas Red	Madeira Classic 40



Color Film

Wilcom EmbroideryStudio - Designing

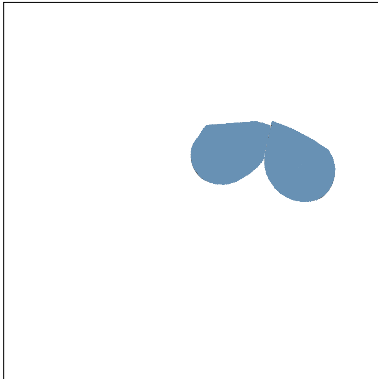
BUTTERFLY A 5X5

Design: **Butterfly A 5x5**

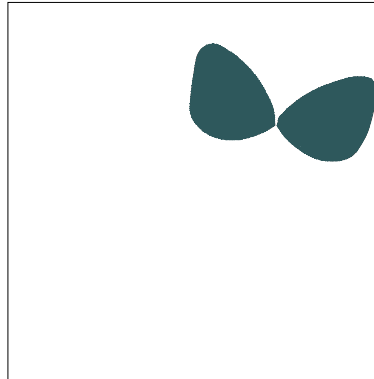
Title:

Stitches: 6,058
Height: 104.4 mm
Width: 127.2 mm
Colors: 4
Colorway: Colorway 1
Zoom: 0.37

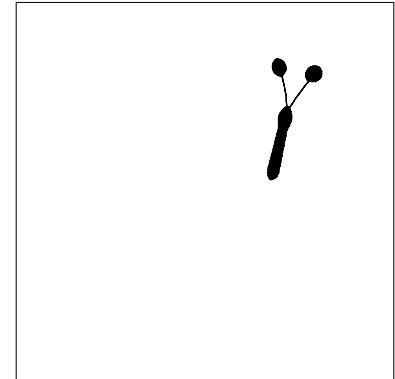
LOGO4
Digitizing
ORDERS AT
SALES@LOGO4DIGITIZING.COM



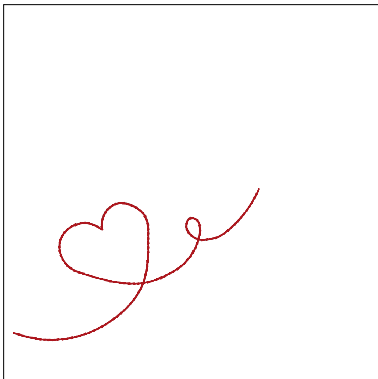
Stop #: 1
Element:
Code: 1028
Name: Country Kitchen Blue
Chart: Madeira Classic 40
Stitches: 2,112
Thread used: 13.23m



Stop #: 2
Element:
Code: 1252
Name: Neptune
Chart: Madeira Classic 40
Stitches: 3,035
Thread used: 19.74m



Stop #: 3
Element:
Code: 1000
Name: Black
Chart: Madeira Classic 40
Stitches: 439
Thread used: 2.87m



Stop #: 4
Element:
Code: 1147
Name: Christmas Red
Chart: Madeira Classic 40
Stitches: 470
Thread used: 2.22m