

Production Worksheet

Wilcom EmbroideryStudio - Designing

BUTTERFLY A 4X4

Design: **Butterfly A 4x4**

Title:

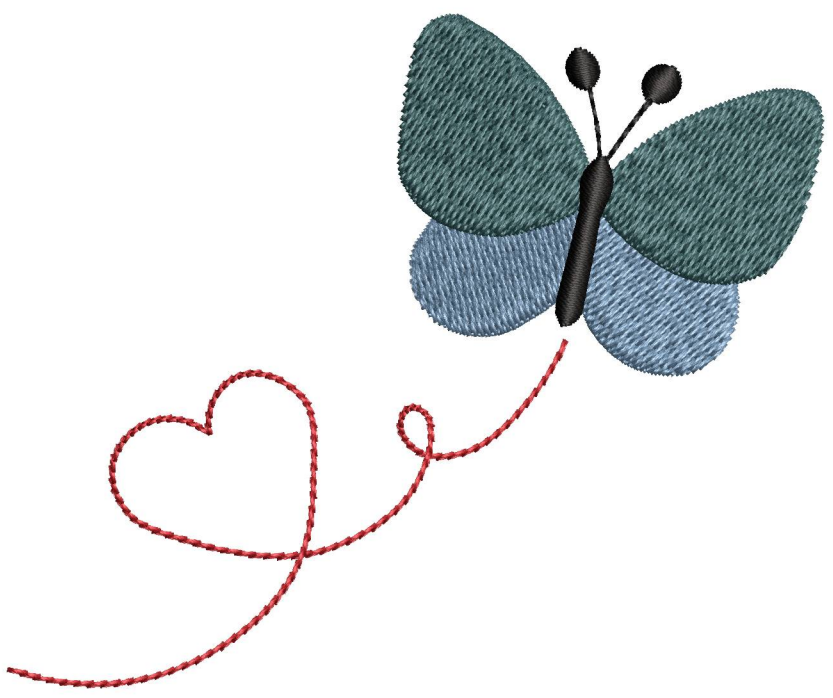
Stitches: 3,821
 Height: 78.2 mm
 Width: 95.2 mm
 Colors: 4
 Colorway: Colorway 1
 Zoom: 1.13



Machine format: Tajima
 Color changes: 3
 Stops: 4
 Trims: 4
 Left: 47.6 mm
 Right: 47.6 mm
 Up: 39.1 mm
 Down: 39.1 mm
 EndX: 0.0 mm
 EndY: 0.0 mm
 Area: 7442.1 mm²
 Max stitch: 5.7 mm
 Min stitch: 0.3 mm
 Max jump: 6.8 mm

Stop Sequence:

| # | N# | Color | St. | Code | Name | Chart |
|----|----|-------|-------|------|----------------------|--------------------|
| 1. | 3 | | 1,287 | 1028 | Country Kitchen Blue | Madeira Classic 40 |
| 2. | 1 | | 3,108 | 1252 | Neptune | Madeira Classic 40 |
| 3. | 4 | | 3,445 | 1000 | Black | Madeira Classic 40 |
| 4. | 2 | | 3,819 | 1147 | Christmas Red | Madeira Classic 40 |



Color Film

Wilcom EmbroideryStudio - Designing

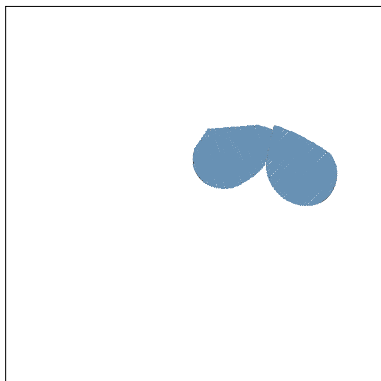
BUTTERFLY A 4X4

Design: **Butterfly A 4x4**

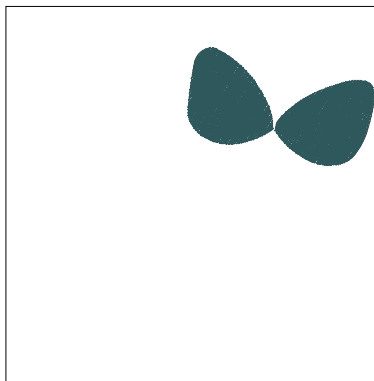
Title:

Stitches: 3,821
Height: 78.2 mm
Width: 95.2 mm
Colors: 4
Colorway: Colorway 1
Zoom: 0.50

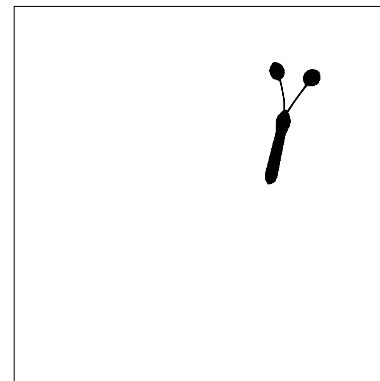
LOGO4
Digitizing
ORDERS AT
SALES@LOGO4DIGITIZING.COM



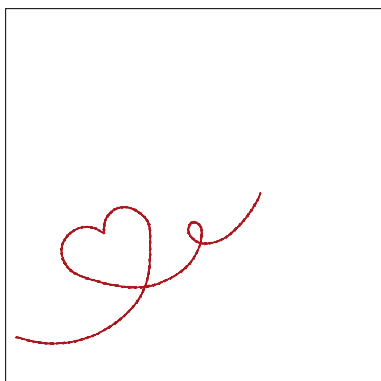
Stop #: 1
Element:
Code: 1028
Name: Country Kitchen Blue
Chart: Madeira Classic 40
Stitches: 1,287
Thread used: 7.68m



Stop #: 2
Element:
Code: 1252
Name: Neptune
Chart: Madeira Classic 40
Stitches: 1,821
Thread used: 11.40m



Stop #: 3
Element:
Code: 1000
Name: Black
Chart: Madeira Classic 40
Stitches: 337
Thread used: 1.86m



Stop #: 4
Element:
Code: 1147
Name: Christmas Red
Chart: Madeira Classic 40
Stitches: 374
Thread used: 1.71m